

PARTS CATALOGUE

Haygrove

FOR GROWERS BY GROWERS

For over 25 years we've been pioneering the development of polytunnels and associated growing systems. Over this time, we've also been growing berries and cherries on our own farms across the globe.

From the structural hoops that create our tunnel shapes; right down to the nuts, bolts, cables and clamps used throughout the systems, we're constantly innovating, and we test our products on our own farms commercially before supplying them to growers of over 30 crops in over 50 countries.

With this catalogue, you can quickly and easily navigate our range of parts and accessories, and when the time comes to order replacements, all you need to do is give us a call.

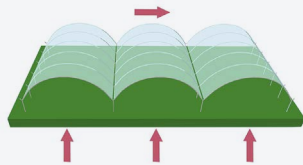
We look forward to helping you get the most out of your growing systems.



HSO™ STEEL & CLAMPS



A-Direction
Across the width



B-Direction
Down the length



A-Direction
Clamp

B-Direction
Clamp

HSO stands for High Strength Oval, and it's a smart way to add strength to your tunnel structure. The oval shape of the steel adds strength to the tunnel where it's most needed. Haygrove HSO steel is available in two sizes: HSO 80 and HSO 60. The choice of steel size most suitable for your tunnel will be determined by the climatic conditions of your specific site.

Because HSO has a non-uniform shape, Haygrove has developed clamps that fix in what we call the 'A-DIRECTION' and the 'B-DIRECTION'.

A-DIRECTION clamps are used for fixing items that *go across the width* of the tunnel such as Hoop Bracing Struts or V-Struts.



B-DIRECTION clamps are used for fixing items that *go down the length* of the tunnel such as End Kit Struts.



Look out for the symbols for A and B direction clamps to ensure you order the correct one.

CONTENTS

1. CLAMPS	2
2. CLIPS	10
3. FASTENERS	14
4. GUTTER ACCESSORIES	18
5. SUBSTRATE ACCESSORIES	22
6. DRIVE SYSTEMS	26
7. CABLE, CHAIN & WIRE	34
8. ROPE, STRING & TAPE	38
9. SHEET MATERIALS	42
10. POLYLOCK	44
11. STEEL LENGTHS	46
12. LEGS & ANCHORS	48
13. AUGER UNIONS	50
14. TOOLS	52
15. POLYTHENE	56
INDEX	76

1. CLAMPS

CLAMPS

U-BOLT



Main Uses:

V and Star Wires | End Kits | Doors | Perimeter Anchors | Horizontal Bracing | Lattice Cabling

Code	Description	Note
C40UB	U-Bolt	40mm
C508UB	U-Bolt	50mm
C6040HSOUB	U-Bolt	60mm x 40mm in A direction
C8040HSOUB	U-Bolt	80mm x 40mm in A Direction
C80HSOUB	U-Bolt	80mm x 40mm in B Direction

EXTRA LONG U-BOLT



Main Uses: Doors | Side Frame Kits

Code	Description	Note
C40UBELSA	U-Bolt inc Flat Plate & Spacer	40mm
C51UBELSA	U-Bolt inc Flat Plate & Spacer	50mm
C8040BHSOUBEL	U Bolt inc Flat Plate & Spacer	HSO80 in B Direction
C8040HSOUBEL	U Bolt inc Flat Plate & Spacer	HSO80 in A Direction
C508UBELS	U-Bolt Long with Saddle	50mm

CLAMPS

U-BOLT WITH PRESSURE PLATE



Main Uses: Lattice Cabling

Code	Description	Note
C40UBPP	U-Bolt with Pressure Plate	40mm
C508UBPP	U-Bolt with Pressure Plate	50mm
C8040HSOUBPP	U-Bolt with Pressure Plate	HSO 80

FLAT PLATE



Main Use: Alternative Plate For U-Bolt

Code	Description	Note
C40P	Plate for U-Bolt	40mm
C50P	Plate for U-Bolt	50mm

HINGE CLAMP



Main Use: End Kits | Perimeter Anchors | Doors | Horizontal Bracing

Code	Description	Note
C35HCNB	Hinge Clamp Nut & Bolt	35mm
C40HCNB	Hinge Clamp Nut & Bolt	40mm x 40mm
C50HCNB	Hinge Clamp Nut & Bolt	50mm
C60HCNB	Hinge Clamp Nut & Bolt	60mm
C6040BHSOHCNB	Hinge Clamp Nut & Bolt	60mm x 40mm in B Direction
C8040BHSOHCNB	Hinge Clamp Nut & Bolt	80mm x 40mm in B Direction

CLAMPS

NON-HINGE CLAMP



Main Use: End Kits | Perimeter Anchors | Doors | Horizontal Bracing

Code	Description	Note
C35AC	Clamp Nut & Bolt (Without Hinge)	35mm
C40AC	Clamp Nut & Bolt (Without Hinge)	40mm
C50AC	Clamp Nut & Bolt (Without Hinge)	50mm
C8040BHSOAC	Clamp Nut & Bolt (Without Hinge)	HSO 80 in B Direction
C6040BHSOAC	Clamp Nut & Bolt (Without Hinge)	HSO 60 in B Direction
C8040AHSOAC	Clamp Nut & Bolt (Without Hinge)	HSO 80 in A Direction
C6040AHSOAC	Clamp Nut & Bolt (Without Hinge)	HSO 60 in A Direction

TRELLIS CABLE CLAMPS



Main Uses: Stability Cabling | Trellis Cabling | Leg Cabling

Code	Description	Note
TA01459	Trellis Cable Clamp	50mm
TA01126	Trellis Cable Clamp	40mm

CLAMPS

POLYLOCK RAIL CLAMP



Main Use: Roller Venting

Code	Description	Note
TA02050	Polylock Rail Clamp	40mm
TA02051	Polylock Rail Clamp	50mm
TA01779	Polylock Rail Clamp	HSO 60
TA01835	Polylock Rail Clamp	HSO 80
TP11142	Cable Clamp Polylock Washer	
TA02517	Topside Polylock Rail Clamp	HSO 80, HSO 60

SIDE BRACING CLAMP



Main Use: Steel Side Bracing | Doors

Code	Description	Note
C35SBCSA	Side Bracing Clamp	35mm to 35mm
C40SBCSA	Side Bracing Clamp	35mm to 40mm
C50SBCSA	Side Bracing Clamp	35mm to 50mm

CLAMPS

DOOR CLAMPS

DOOR SUPPORT BRACKET



Main Use: Vertical Door Support

Code	Description	Note
TA02119	Door Support Bracket	40mm

ROLLER DOOR PLATE



Main Use: Doors

Code	Description	Note
EGDP	Electric Gearbox Door Plate	Wide Plate with 2 U-bolts
SDF028	Roller Door Plate	Plate with 2 U-Bolts

DOOR BASE FOLLOWER



Main Use: Doors

Code	Description
TA02132	Door Base Follower

CLAMPS

TOP TUBE ACCESSORIES

TERMINATION CLAMP

Main Use: Top Tube Bracing

Code	Description	Note
XDROP35/6040T	Top Bracing Termination Clamp	35mm to 60mm x 40mm Hoop
XDROP35/8040T	Top Bracing Termination Clamp	35mm to 80mm x 40mm Hoop



TOP TUBE JOINER

Main Uses: Top Tube Bracing

Code	Description	Note
SR00039	Top Tube Joiner	200mm x 35mm x 1.5mm



TWIST DROPPER

Main Use: Top Tube Bracing

Code	Description	Note
XDROP35/6040	Top Tube Twist Dropper	35mm to 60mm x 40mm Hoop in A Direction
XDROP35/8040	Top Tube Twist Dropper	35mm to 80mm x 40mm Hoop in A Direction
TP11429	Top Bracing Dropper Plate	Universal



CLAMPS

MISCELLANEOUS CLAMPS

D SHACKLE

Main Use: Headland Bracing | Perimeter Cable Bracing

Code	Description	Note
KK00580ALT	U-Bolt for Wire Tensioner	D Shackle



ADJUSTABLE CLAMP

Main Use: Fixed Top Vent Hoop | HSO Horizontal Bracing

Code	Description	Note
TA02032	Fixed Top Vent Clamp	80mm x 40mm
TA02659	Fixed Top Vent Clamp	Fixed Top Vent HSO 60
TA02667	Fixed Top Vent Apex Clamp Assembly	Fixed Top Vent



2. CLIPS

CLIPS

HOOP CLIPS



Main Uses: End Kits | Roller Doors | Roller Side Skirts

Code	Description	Note
C35HPC	Hoop Clip	35mm
C40HPC	Hoop Clip	40mm
C50HPC	Hoop Clip	50mm
C6040HSOHPC	Hoop Clip	60mm x 40mm
C8040HSOHPC	Hoop Clip	80mm x 40mm
C6040HSOHPC	Hoop Clip	60mm x 40mm
C60HPC	Hoop Clip	60mm



Main Uses: Roller Venting

Code	Description	Note
TP09091VS	Polymer Hoop Clip	32mm (20–35mm Thickness)

CLIPS

VENTING CLIP



Main Uses: Manual Venting

Code	Description	Note
CVENT	Venting Clip	35mm/40mm – 4mm Galvanised Spring Wire
CVENT50	Venting Clip	50mm – 4mm Galvanised Spring Wire

WIRE CLIP



Main Uses: Top Wire Bracing | Side Skirts | Raspberry Crop Support

Code	Description	Note
C35WC	Wire Clip	35mm
C40WC	Wire Clip	40mm
C50WC	Wire Clip	50mm
C6040WC	Wire Clip	60mm x 40mm
C8040WC	Wire Clip	80mm x 40mm
C60WC	Wire Clip	60mm

CROP SUPPORT ACCESSORIES



Main Uses: Raspberry Crop Support

Code	Description	Note
TP10783	Top Bar Clip	3mm Wire

Main Uses: Raspberry Crop Support

Code	Description
TA02314	Bungee With Ball



3. FASTENERS

FASTENERS

BOLTS*



Code	Description	Note
BOLTM830	Bolt Hex Head BZP	M8 x 30mm
BOLTM840	Bolt Hex Head BZP	M8 x 40mm
BOLTM850	Bolt Hex Head BZP	M8 x 50mm
BOLTM855	Bolt Hex Head BZP	M8 x 55mm
BOLTM865FT (Full Thread)	Bolt Hex Head BZP	M8 x 65mm DIN933 Fully Threaded Bolt
BOLTM880	Bolt Hex Head BZP	M8 x 80mm

CARRIAGE BOLTS*



Code	Description	Note
CBOLTM830	Carriage Bolt BZP	M8 x 40mm
CBOLTM850	Carriage Bolt BZP	M8 x 50mm
CBOLTM865	Carriage Bolt BZP	M8 x 65mm
CBOLTM835	Carriage Bolt BZP	M8 x 35mm
CBOLTM840	Carriage Bolt BZP	M8 x 40mm
CBOLTM845	Carriage Bolt BZP	M8 x 45mm

NUTS*



Code	Description	Note
CNUTM12	Nut	M12
CNUTM8	Nut	M8
CNUTM10	Nut	M10
CNUTM8LK	Nut	M8 Locking Nut
CNUTM6LK	Nut	M6 Locking Nut

* Other sizes available on request.

TO PLACE AN ORDER CALL 01531 633659

FASTENERS

WASHERS*



Code	Description	Note
CWASHSTL	Steel Washer	M8 BS 4320 G Steel Zinc (24mm O/D 2mm Thick)

RIVETS*



Main Uses: Rainwater Gutter

Code	Description	Note
RPOPNZ0410	Pop Rivet	NZ 4x10.DIN7337 Aluminium

SCREWS*



Code	Description	Note
CTEKS	Tek Screw with Washer	5.5mm x 25mm BZP Zinc
CTEK	Tek Screw without Washer	5.5mm x 25mm BZP Zinc

* Other sizes available on request.



4. GUTTER ACCESSORIES

GUTTER ACCESSORIES

DOWNPIPE



Main Uses: Rainwater Gutter

Code	Description	Note
TW00867	Down Pipe for End Section	Steel Gutter 102mm OD

END PLATES



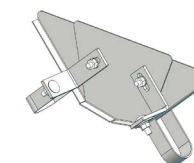
Main Uses: Pioneer Rainwater Gutter

Code	Description	Note
TA01341	End Plate for Pioneer Rain Gutter	50mm
TA01815	End Plate for Pioneer Rain Gutter	60mm x 40mm
TA01852	End Plate for Pioneer Rain Gutter	80mm x 40mm



Main Uses: Greenhouse Rainwater Gutter

Code	Description	Note
TA01855	End Plate for U-leg Rainwater Gutter	For Greenhouse HSO 80



Main Uses: Roller Venting/Hoop & Side Venting

Code	Description	Note
TA02611	Gutter End Plate	Total Vent HSO80
TA02652	45 Degree Gutter End Plate	HSO 60

GUTTER ACCESSORIES

RAINCAPS



Main Uses: Legs

Code	Description	Note
XRAINCAP30	Rain Cap for Tube	30mm
XRAINCAP40	Rain Cap for Tube	40mm
XRAINCAP5030	Rain Cap for HSO Tube	50mm x 30mm
XRAINCAP6040	Rain Cap for HSO Tube	60mm x 40mm
XRAINCAP7131	Rain Cap for HSO Tube	71mm x 31mm
XRAINCAP8040	Rain Cap for HSO Tube	80mm x 40mm

TUBE SLEEVE



Main Uses: Rainwater Gutter

Code	Description	Note
TA01344	Tube Sleeve	50mm
T0030604015HSOC	Tube Sleeve	HSO 60
T0030804015HSOC	Tube Sleeve	HSO 80

GUTTER ACCESSORIES

ROPE HOOK BRACKET



Main Uses: Rainwater Gutter

Code	Description	Note
TA00565	Rope Hook Bracket w/out Mechanised Hoop Venting	Pioneer 40 Rainwater Gutter
TA01477	Rope Hook Bracket w/out Mechanised Hoop Venting	Pioneer 50 Rainwater Gutter
TA00551	Rope Hook Bracket with Mechanised Hoop Venting	Pioneer 40 Rainwater Gutter
TA01813	Rope Hook Bracket with Mechanised Hoop Venting	Pioneer HSO Rainwater Gutter
TA01814	Rope Hook Bracket with Mechanised Hoop Venting	Pioneer HSO Rainwater Gutter
TA02408	Rope Hook Bracket with Mechanised Hoop Venting	EZvent® HSO Rainwater Gutter
TA01858	Rope Hook Bracket	Greenhouse HSO 80 Rainwater Gutter
TA02612	Rope Hook Gutter Bracket	Total Vent HSO80 and HSO60

TOTAL VENT



Main Uses: Rainwater Gutter

Code	Description	Note
TW03398	Total Vent Gutter Leg	HSO 80

5. SUBSTRATE ACCESSORIES

SUBSTRATE ACCESSORIES

ADJUSTABLE TRUSS SUPPORT



Main Uses: Substrate Brackets

Code	Description	Note
TA02163	Individual Adjustable Truss Support	100mm for 8mm Bracket (with fixings)
TP11418	Joined Adjustable Truss Support	100mm (No fixings)

END CAPS WITH DOWNPIPE



Main Uses: Substrate Systems

Code	Description	Note
TP03785	End Cap with Downpipe	for A130 Substrate Gutter
TP02371	End Cap with Downpipe	for B200 Substrate Gutter
TP08148	End Cap with Downpipe	for C160 & D160 Substrate Gutter
TP08150	End Cap with Downpipe	for C200 & D200 Substrate Gutter

SUBSTRATE ACCESSORIES

END CAPS WITHOUT DOWNPIPE



Main Uses: Substrate Systems

Code	Description	Note
TP04886	End Cap without downpipe	for A130 Substrate Gutter
TP02372	End Cap without downpipe	for B200 Substrate Gutter
TP08149	End Cap without downpipe	for C160 & D160 Substrate Gutter
TP08151	End Cap without downpipe	for C200 & D200 Substrate Gutter

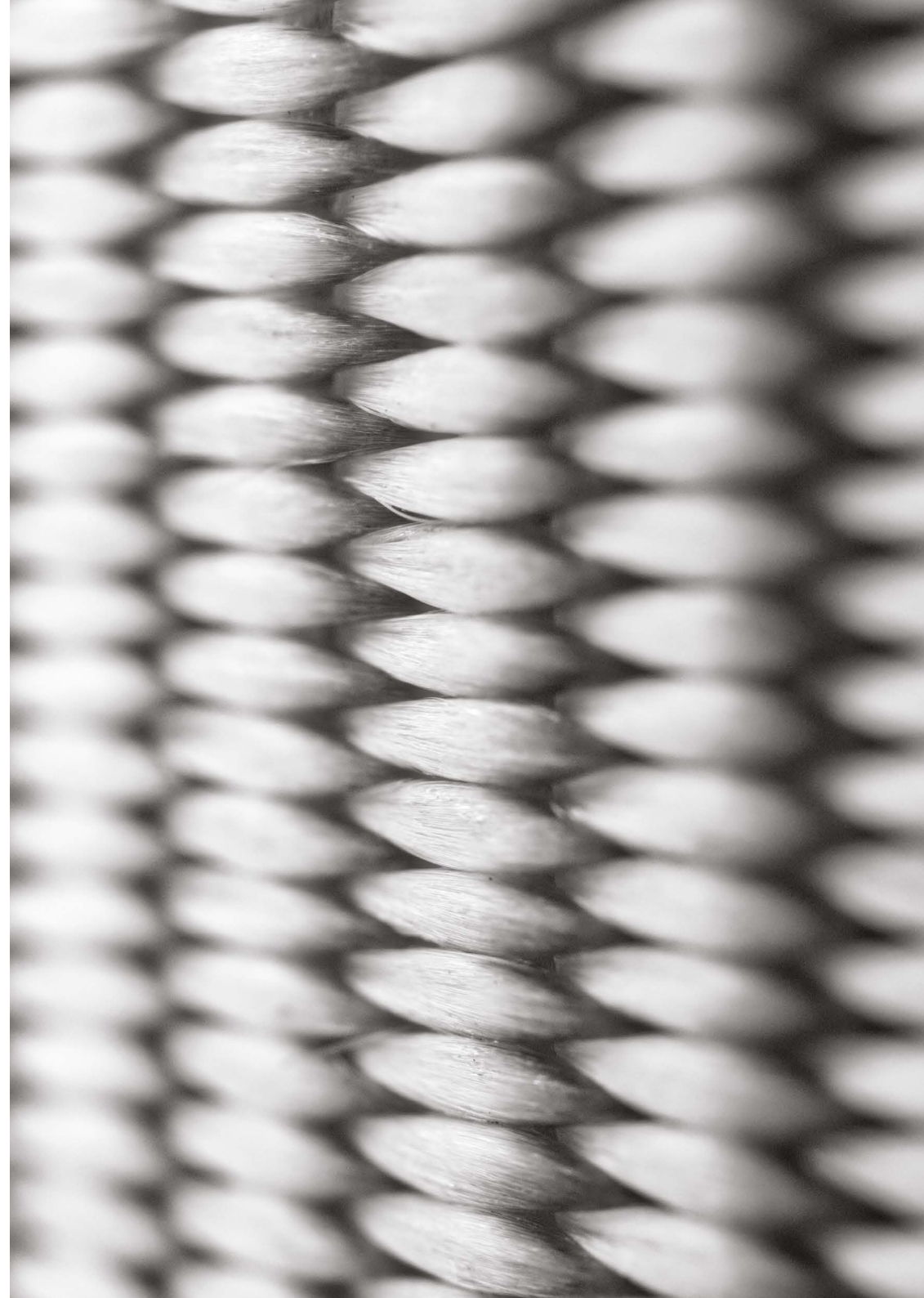
LEAF CLIPS



Main Uses: Substrate Brackets

Code	Description	Note
TP08932	Leaf Support Clip for 8mm Wire	Notched Pattern

For Truss Support Tape go to page 41.



6. DRIVE SYSTEMS

DRIVE SYSTEMS

DOOR MECHANISM

AC ELECTRIC DOOR MOTOR



Main Uses: Roller Doors

Code	Description	Note
PMGB3P80VS	PMGB3P80VS	Ratio 80:1 3 Phase 415v 0.55kW
PMGB3PA	Power Motor Gearbox 3 Phase	80:1, 415v 0.55kW

Main Uses: Roller Doors AC Electric Motor

Code	Description	Note
TA00935	Roller Trolley	For AC Door Motor
TA02220	Coupling	25mm to 40mm

AC ELECTRIC DOOR MOTOR WITH LIMIT SWITCH



Main Uses: Roller Doors

Code	Description	Note
PMGB3P80LK	3~ Motor	

Main Uses: Roller Doors AC Electric Motor

Code	Description	Note
TA02216	Roller Trolley	For AC Door Motor
TA02289	Coupling	26mm to 40mm

DOOR MECHANISM

DC ELECTRIC DOOR MOTOR



Main Uses: Roller Doors

Code	Description	Note
EM24S10019	Electric Motor 24v DC 100 N.m 100W Single Shaft O/P	19mm output shaft with Gearbox & Limit Switches

Main Uses: Roller Doors DC Electric Motor

Code	Description	Note
TA00802	Roller Trolley	For DC Door Motor

DOOR MECHANISM

MANUAL GEARBOX DOOR GEARBOX



Main Uses: Roller Doors

Code	Description	Note
A XRGCM	Reducing Gear 1/24 Carriage Mounted	
B XGEARHAND	Crank Handle for Gearbox	
C XGEARCRANK	Crank Shaft 2.5m	
D TW00116	Drive Shaft Hook	With shown accessories
E TA02471ED	Universal Joint for XGEARCRANK	
XGEARCRANKXL	XL Crank Shaft 4.5m - Union Joint	for Mechanical Gearbox

DRIVE SYSTEMS

DOOR MECHANISM

MANUAL DOOR WINDER

Main Uses: Roller Doors

Code	Description	Note
ASD007	Roller Door Manual Winder	Large



Main Uses: Roller Doors

Code	Description	Note
TA02461	Universal Joint Kit	c/w Nut & Bolt

VENTS & SIDE SKIRTS

AC ELECTRIC VENT MOTOR

Main Uses: Roller Venting | Retractable Shade

Code	Description	Note
XGEARBOX4002C-2VS	Gearbox Electric Vent Motor - 3 Phase 0.25 kW - 2 Coupling	400v PR3 Motor Hp0.35 RPM 3 Nm 270 Shaft w/2 Coupl
XGEARBOX400-2VS	Gearbox Electric Vent Motor - 3 Phase 0.25 kW	400v PR3 Motor Hp0.35 RPM 3 Nm 270 Shaft



Main Uses: Roller Venting | Roller Side Skirts | AC Electric Motors

Code	Description	Note
TA01199	Multibay Mounting Bracket	For AC Venting Motor
TA02238	Solo / Side Skirt Bracket	For AC Venting Motor
TA02239	Solo/Side Skirt Bracket Cover	For AC Venting Motor

DRIVE SYSTEMS

VENTS & SIDE SKIRTS

MANUAL GEARBOX VENT GEARBOX

Main Uses: Roller Venting | Roller Side Skirts

Code	Description	Note
XGEARBOX16NVS	Gearbox R16 Ratio 16:1 (No Handle)	for Hand Operated Roller System
XGEARBOX8NVS	Gearbox R8 Ratio 8:1 (No Handle)	for Hand Operated Roller System
XGEARBOXHAVSIT	Gearbox Handle R8/R16	for Hand Operated Roller System



Main Uses: Roller Side Skirt | Roof Venting | Retractable Shade Screen

Code	Description	Note
XGEARBOX40N27VS	Manual Gearbox	(40:1) with shaft diam 27mm

Main Uses: Roller Venting

Code	Description	Note
XGEARBOX4420ED	Manual Gearbox - 20mm shaft	44:1 Manual Gearbox with Trolley

Main Uses: Roller Side Skirts

Code	Description	Note
XGEARBOX4428ED	Manual Gearbox - 28mm shaft	44:1 Manual Gearbox with Trolley

ROOF VENTING

Main Uses: Roof Venting

Code	Description	Note
TP11939	Pinion Cage for Rack	2mm/2/5mm Thick Pinion 34.3
TP12009	Toothed Rack	20/10 Straight MM 1313 Flat End



DOUBLE SKIN INFLATION KITS

Main Uses: Double Skin Kits

Code	Description	Note
CQFJPJ-LXZ-140A	Centrifugal Inflation Blower Accessories 1	Set - Air Inlets 1, 3 & 4
CQFJPJ-LXZ	Centrifugal Inflation Blower Accessories 2	Set - Air Inlets 1 & 2
FLC-LCF/140A	Centrifugal Inflation Blower	220V 50Hz 90W 0.5A



DRIVE SYSTEMS

VENTS & SIDE SKIRTS

VENTING ACCESSORIES



Main Uses: Roller Venting

	Code	Description	Note
A	TELEARMVS	Telescopic Arm (maximum opening 2500 mm)	
B	ASD023VS	Universal Joint for Telescopic Arm / Plastic Wheel	Cardan Joint Side 1
C	ASD024VS	Universal Joint for Telescopic Arm	Cardan Joint Side 2



7. CABLE, CHAIN & WIRE

CABLE, CHAIN & WIRE

CABLE



Main Uses: Trellis Cabling | Lattice Cabling | Headland Bracing

Code	Description	Note
VWC050050ALT	Linear Metres – Cable 7 x 19	5mm High Tensile Galvanised (500m Reel)
WC100030HT7X7	Linear Metres – Cable 7 x 7	3.0mm High Tensile Galvanised (1000m Reel)

CHAIN



Main Uses: Crop Support Systems | Hanging Substrate Systems

Code	Description	Note
CHAIN426	Metres of Chain	4mm x 26mm Internal Length
CHAIN520	Metres of Chain	5mm x 20mm Internal Length
CHAIN2231	Metres of Twisted Chain	2.2mm x 31mm Internal Length

WIRE



Main Uses: V and Star Wires | Top Wire | Side Skirts

Code	Description	Note
W65025HT	Wire	2.5mm x 650m High Tensile Galvanised 25kg

CABLE, CHAIN & WIRE

WIRE ACCESSORIES

S-HOOKS



Main Uses: Top Tape Bracing

Code	Description	Note
XSHOOKS5	S Hooks	5mm BZP Wire Open Ended

WIRE CABLE GRIPS



Main Uses: Crop Support Systems | Trellis Cabling | V Wires | Lattice Cabling

Code	Description
CMGRIPPLE	Gripple Wire Joiner



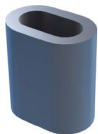
Main Uses: Stability Cabling | Lattice Cabling

Code	Description	Note
CABLEGRIP	Cable Clamp Wire Rope Grip	2.5mm & 3.0mm Cable DIN741

Main Uses: Trellis Cabling

Code	Description	Note
CC5D	Cable Clamp Wire Rope Grip	5mm Cable DIN 1142 CC54 Gold
VCCC65ALT	Cable Clamp	6.5mm

FERRULES



Main Uses: Top Tape Bracing

Code	Description	Note
FERRULES	Aluminium Ferrule	3.5mm



8. ROPE, STRING & TAPE

ROPE, STRING & TAPE

ROPE



Main Uses: Sheeting Rope

Code	Description	Note
RS22006PSBLK	Sheeting Rope	220m x 6mm Poly Steel Black with Marker Yarn



Main Uses: Sheeting Rope

Code	Description	Note
RS22006PSF	Sheeting Rope - 6mm RED	220m x 6mm Poly Steel Ferric Oxide

STRING



Main Uses: Crop Support Systems

Code	Description	Note
XRASPSTRING	Raspberry Lacing String	120m/roll 100g roll



Main Uses: Crop Support Systems

Code	Description	Note
XTTSTRING	String Table Top Mesh Support PE Twisted Twine	1,000m/roll 300kly UV Orange 2.5kg Roll

ROPE, STRING & TAPE

TAPE

QUICK RELEASE TAPE



Main Uses: End Kits | Roller Doors | Roller Venting

Code	Description	Note
XTAPEQRT3	Green Quick Release Tape	50m x 12.6cm Wide
XTAPEQRT165	Green Quick Release Tape	50m x 16.5cm Wide
XTAPEQRT200	Green Quick Release Tape	50m x 20.0cm Wide

REPAIR TAPE



Main Uses: Tunnel Management

Code	Description	Note
XTAPEREP7525	Repair Tape Clear PE Poly	25m x 75mm

SHEETING TAPE



Main Uses: Sheeting Tape

Code	Description	Note
XTAPESHEET	Sheeting Tape	25mm White 1250kg Polyester (100m on roll)

ROPE, STRING & TAPE

TOP TAPE



Main Uses: Top Tape Bracing

Code	Description	Note
XTAPETOP	Top Tape	25mm K1 Green 6029 (100m on roll)

TRUSS SUPPORT TAPE

Main Uses: Substrate Systems

Code	Description
XTTST100	Truss Support Tape



POLYLOCK TAPE



Main Uses: Roller Venting

Code	Description	Note
XQRT200	Polylock Tape White	Metres 12.5cm Wide

S-HOOKS



Main Uses: Top Tape Bracing

Code	Description	Note
SGR0006	S-Hooks	8mm

9. SHEET MATERIALS

SHEET MATERIALS

BIRD NET



Main Uses: Tunnel Ends and Sides

Code	Description	Note
NB10012G17	Bird Net Knitted 17mm x 17mm Mesh	12.0m x 100m Green 17g/sqm

TRUSS SUPPORT MESH



Main Uses: Double Row Substrate Systems

Code	Description	Note
XWMESH1200	White Truss Mesh Netting	1.2m x 200m

WOVEN MATERIAL



Main Uses: Roller Doors | Roller Side Skirts

Code	Description	Note
SDF051	Reinforced Woven Material	for Doors 4m x 50m x 160g
SDF050	Reinforced Woven Material	for Doors 4m x 100m x 160g

PLASTIC RAIN GUTTER

Main Uses: Rainwater Gutter

Code	Description	Note
TP11976	Plastic Rain Gutter 500m Long-700mu	600mm Wide Roll

10. POLYLOCK

POLYLOCK ITEMS



Main Uses: Roller Venting

Code	Description	Note
KK02182	Lightweight Channel	Zig-Zag Wire x 2.4m Long



Code	Description	Note
TA01129	Joiner for Polylock	40 x 40 Profile



Code	Description	Note
TP06309CN	5.9m Polylock Self Supporting Rail Zig Zag Insert	41mm x 41.8mm x 1.25mm



Main Uses: Roller Venting

Code	Description	Note
KK01252	Zip Lock Wire 2m Lengths	Blue 2.3mm o/d

11. STEEL LENGTHS

STEEL LENGTHS

SIZES AVAILABLE ON REQUEST



TO PLACE AN ORDER CALL 01531 633659

12. LEGS & ANCHORS

LEGS & ANCHORS

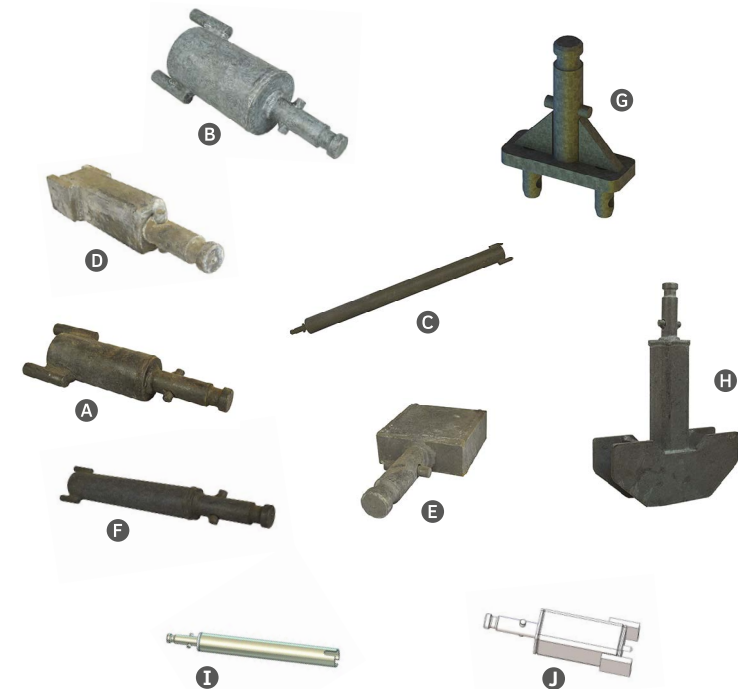
SIZES AVAILABLE ON REQUEST



TO PLACE AN ORDER CALL 01531 633659

13. AUGER UNIONS

AUGER UNIONS



Main Uses: Tool attachment to drill legs and anchors into the ground.

	Code	Description	Note
A	PXAUG50SOL00	Auger Union	Solo 50 Single Prong Anchor 0m Uplift Anchors
B	PXAUG80SOL00	Auger Union	HSO 80 Solo Single Prong 0m Uplift
C	PXAUG80SOL0100	Auger Union	HSO 80 Solo Single Prong, up to 1m Uplift
D	PXAUGDOUBF	Auger Union	Solo Double Prong
E	PXAUGHALO	Auger Union	for Twist Anchors
F	PXAUGSING	Auger Union	Solo 40 Single Prong Anchor 0m Uplift Anchor
G	PXAUGTELE	Auger Union	Telescopic Leg
H	TW02443	Auger Union	Universal for all Pioneer 'Y' Piece, Ventura 'V' Leg and Greenhouse 'U' Leg
I	PXAUGSSL	Auger Union	Auger Union for 50mm Anchor
J	TW02036	Auger Union	for Double Prong 60mm Anchor with Footplate

14. TOOLS

TOOLS



HOLE SAW & ARBOR KIT

Code	Main Uses	Other use
XHOLESAW	Rainwater Gutters	Cutting downpipes in gutter



POP RIVET TOOL

Code	Main Uses	Other use
XPRTOOL	Rainwater Gutters	Insert rivets



WIRE TOOL

Code	Main Uses	Other use
XWIRETOOL	Top Wire, Side Skirts	Securing wire to tube



TRELLIS TENSIONING TOOL

Code	Main Uses	Other use
TRTTF	Stability Cabling, Trellis Cable	Used in combination with Trellis Ratchet Tool. 3 to 9mm Wire



TRELLIS RATCHET TOOL

Code	Main Uses	Other use
TRRT	Stability Cabling, Trellis Cabling	Used in combination with Trellis Tensioning Tool.

TOOLS



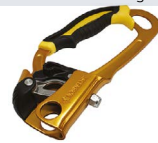
ROPE CLAMP

Code	Main Uses	Other use
CROPEO	Sheeting Rope	Used for tensioning ropes
CROPE	Rope Clamp	Used for Tensioning Ropes



SNOW PUSHER ALUMINIUM 30X2MM

Code	Main Uses	Other use
XSNOWPUSH	Tunnel management in snow events	Used in combination with Venting Tool



TAPE CLAMP

Code	Main Uses	Other use
CTAPE	Sheeting Tape	Used for tensioning sheeting tapes

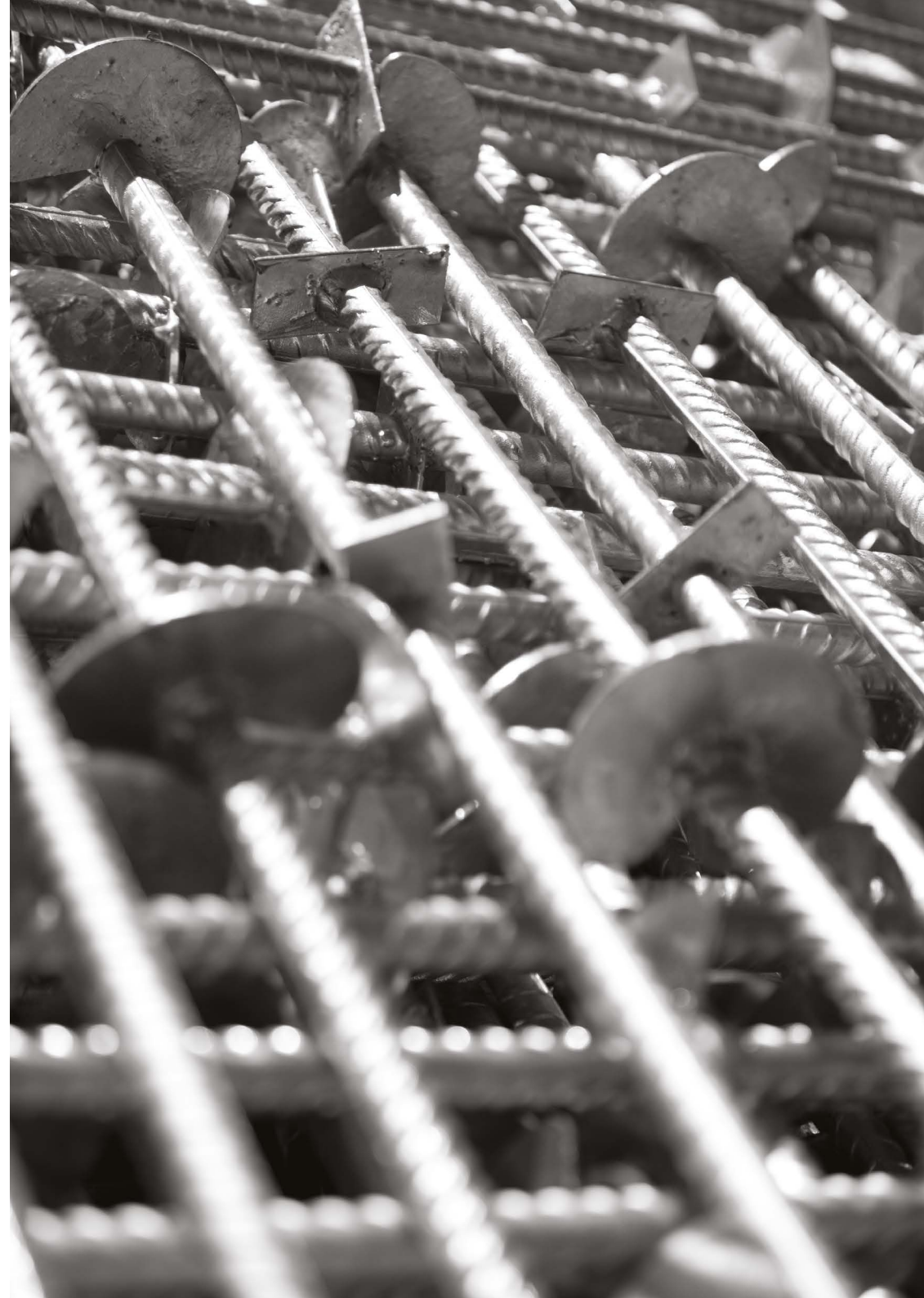


SHEETING TAPE DISPENSER CENTRE

Code	Main Uses	Other use
XTAPEDISCEN	Sheeting Tape	For 25mm tape

FERRULE TOOL

Code	Main Uses	Other use
FERRULETOOL	Ferrule Tool	For 3.5mm Ferrules



15. POLYTHENE

POLYTHENE

SIZES AVAILABLE ON REQUEST



TO PLACE AN ORDER CALL 01531 633659

NOTES

PARTS CATALOGUE

FOR GROWERS BY GROWERS



TO PLACE AN ORDER, CALL:

01531 633659

Haygrove Ltd
Redbank
Ledbury
Herefordshire
HR8 2JL

www.haygrove.com

Company Reg. No. 3266992
VAT No. GB 785 8564 63

Haygrove